



CAREERS 360
PREPARATION **Series**

JEE Cutoffs

for Top IITs





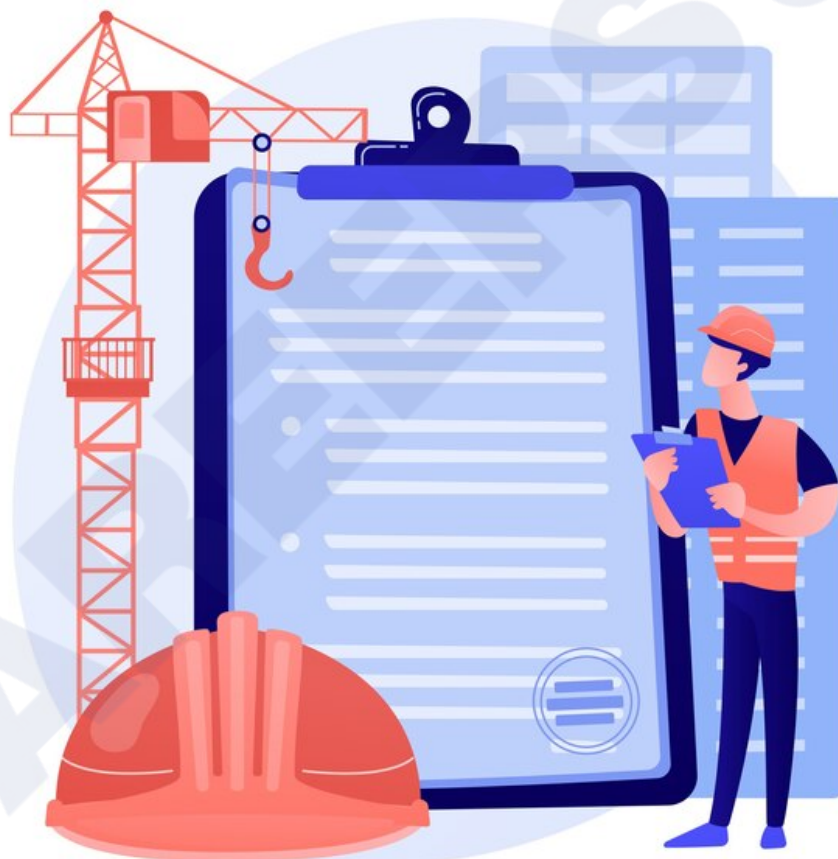
Table of Contents

Introduction	2
What is the JEE cutoff ?	3
Determining Factors of JEE Cutoffs for IITs	4
JEE Cutoffs for IIT Madras	5
JEE Cutoffs for IIT Delhi	11
JEE Cutoffs for IIT Bombay	19



Introduction

Joint Entrance Examination (JEE) is the engineering entrance examination conducted at national level. Every engineering aspirant dreams to crack it and get enrolled in the premier institutions including IITs, NITs, IIITs and GFTIs. The JEE cut offs are published after the exam is concluded and cutoffs for different IITs will be different. Cut Offs are determined based on different factors including number of applicants, number of candidates appearing in the exam, difficulty level of JEE, total number of seats available at respective institutions and previous year cutoff trends. Thus, Careers360 presents an e-book for all the aspirants which will provide JEE cutoffs of IIT Madras, IIT Delhi & IIT Bombay.



What is the JEE Cutoff ?

JEE Main Cutoff is the opening and closing ranks required for a particular programme. It will be published by the National Testing Agency (NTA) after the declaration of the final result. The authorities will release two types of JEE Main cut off - qualifying cutoff and admission cutoff. JEE Main admission cutoff is the minimum marks required by the candidates to be eligible for admission in NITs, IITs, CFITs and other participating institutes.



Determining Factors of JEE Cutoffs for IITs

Following are the factors that are considered while determining the JEE cutoffs for IITs

- Number of candidates appeared for the exam
- Number of seats available
- Difficulty level of exam
- Previous year cutoff trends



JEE Cutoff for IIT Madras

Academic Program Name	Gender	Seat Type	Opening Rank	Closing Rank
Aerospace Engineering (4 Years, Bachelor of Technology)	Gender-Neutral	OPEN	422	3001
		OPEN (PwD)	85P	85P
		EWS	451	701
		OBC-NCL	1131	1606
		OBC-NCL (PwD)	58P	58P
		SC	281	1202
		ST	317	518
Aerospace Engineering (4 Years, Bachelor of Technology)	Female-only (including Supernumerary)	OPEN	4062	5990
		EWS	1306	1306
		OBC-NCL	1741	3594
		SC	787	1628
		ST	548	548
Aerospace Engineering (5 Years, Bachelor and Master of Technology (Dual Degree))	Gender-Neutral	OPEN	3172	3293
		EWS	897	897
		OBC-NCL	1298	1685
		SC	207	207
		ST	372	372
Aerospace Engineering (5 Years, Bachelor and Master of Technology (Dual Degree))	Female-only (including Supernumerary)	OPEN	6279	6279
		OBC-NCL	3019	3019
Biological Engineering (4 Years, Bachelor of Technology)	Gender-Neutral	OPEN	1278	6823
		EWS	1054	1317
		OBC-NCL	2312	3409
		SC	1860	2239
		ST	873	1078

Academic Program Name	Gender	Seat Type	Opening Rank	Closing Rank
Biological Engineering (4 Years, Bachelor of Technology)	Female-only (including Supernumerary)	OPEN	4133	8105
		EWS	2420	2420
		OBC-NCL	2681	4547
		SC	2855	2855
		ST	1187	1187
Biological Science (4 Years, Bachelor of Science)	Gender-Neutral	OPEN	4668	10060
		EWS	1453	1750
		OBC-NCL	3211	4338
		SC	2091	2573
		ST	1214	1270
Biological Science (4 Years, Bachelor of Science)	Female-only (including Supernumerary)	OPEN	12769	15528
		EWS	3393	3393
		OBC-NCL	6265	6620
		SC	3014	3014
		ST	1282	1282
Chemical Engineering (4 Years, Bachelor of Technology)	Gender-Neutral	OPEN	2642	4291
		EWS	518	811
		OBC-NCL	902	1790
		SC	997	1292
		ST	465	581
Chemical Engineering (4 Years, Bachelor of Technology)	Female-only (including Supernumerary)	OPEN	3302	6435
		OPEN (PwD)	211P	211P
		EWS	1560	1699
		OBC-NCL	2742	3535
		SC	1140	1726
		ST	619	919

Academic Program Name	Gender	Seat Type	Opening Rank	Closing Rank
Civil Engineering (4 Years, Bachelor of Technology)	Gender-Neutral	OPEN	4147	5880
		OPEN (PwD)	153P	160P
		EWS	749	1064
		OBC-NCL	1486	2521
		SC	332	1287
		ST	81	464
Civil Engineering (4 Years, Bachelor of Technology)	Female-only (including Supernumerary)	OPEN	7746	9032
		EWS	1545	1845
		OBC-NCL	3315	4531
		SC	1571	1976
		ST	621	800
Computer Science and Engineering (4 Years, Bachelor of Technology)	Gender-Neutral	OPEN	42	144
		OPEN (PwD)	4	4
		EWS	21	36
		EWS (PwD)	5	5
		OBC-NCL	38	100
		OBC-NCL (PwD)	3	3
		SC	16	53
		SC (PwD)	7	7
		ST	11	15
Computer Science and Engineering (4 Years, Bachelor of Technology)	Female-only (including Supernumerary)	OPEN	319	479
		EWS	79	85
		OBC-NCL	232	293
		SC	72	128
		ST	28	28

Academic Program Name	Gender	Seat Type	Opening Rank	Closing Rank
Electrical Engineering (4 Years, Bachelor of Technology)	Gender-Neutral	OPEN	150	908
		OPEN (PwD)	52	102
		EWS	106	218
		EWS (PwD)	8P	8P
		OBC-NCL	165	477
		OBC-NCL (PwD)	55	60
		SC	20	316
		ST	63	146
Electrical Engineering (4 Years, Bachelor of Technology)	Female-only (including Supernumerary)	OPEN	831	2158
		OPEN (PwD)	137P	137P
		EWS	307	368
		OBC-NCL	694	1047
		SC	357	661
		ST	222	302
Engineering Design (5 Years, Bachelor and Master of Technology (Dual Degree))	Gender-Neutral	OPEN	2004	4436
		OPEN (PwD)	105	105
		EWS	566	997
		OBC-NCL	1193	1832
		SC	1175	1753
		ST	632	989
Engineering Design (5 Years, Bachelor and Master of Technology (Dual Degree))	Female-only (including Supernumerary)	OPEN	5588	7929
		EWS	1500	2172
		OBC-NCL	3426	4368
		SC	1797	1887
		ST	1139	1139

Academic Program Name	Gender	Seat Type	Opening Rank	Closing Rank
Engineering Physics (4 Years, Bachelor of Technology)	Gender-Neutral	OPEN	1008	1795
		EWS	663	740
		OBC-NCL	589	1378
		SC	511	1174
		ST	679	847
Engineering Physics (4 Years, Bachelor of Technology)	Female-only (including Supernumerary)	OPEN	2804	4716
		EWS	2346	2346
		OBC-NCL	1429	2088
		SC	1470	1470
		ST	1094	1094
Mechanical Engineering (4 Years, Bachelor of Technology)	Gender-Neutral	OPEN	885	2509
		OPEN (PwD)	8	5P
		EWS	339	513
		EWS (PwD)	44P	44P
		OBC-NCL	444	1225
		OBC-NCL (PwD)	47P	85P
		SC	306	832
		ST	184	424
Mechanical Engineering (4 Years, Bachelor of Technology)	Female-only (including Supernumerary)	OPEN	2807	5547
		EWS	850	1016
		OBC-NCL	1195	2616
		SC	759	1544
		ST	785	803
Metallurgical and Materials Engineering (4 Years, Bachelor of Technology)	Gender-Neutral	OPEN	4648	6004
		EWS	921	1245
		OBC-NCL	1994	2641

Academic Program Name	Gender	Seat Type	Opening Rank	Closing Rank
		SC	1052	1576
		ST	594	729
Metallurgical and Materials Engineering (4 Years, Bachelor of Technology)	Female-only (including Supernumerary)	OPEN	8696	9635
		EWS	1370	1370
		OBC-NCL	4151	5094
		SC	2122	2854
		ST	760	760
Naval Architecture and Ocean Engineering (4 Years, Bachelor of Technology)	Gender-Neutral	OPEN	4799	7461
		OPEN (PwD)	174P	174P
		EWS	1360	1476
		OBC-NCL	1777	3116
		SC	1337	1877
		ST	819	981
Naval Architecture and Ocean Engineering (4 Years, Bachelor of Technology)	Female-only (including Supernumerary)	OPEN	10904	13865
		EWS	2876	3148
		OBC-NCL	5043	5845
		SC	2293	3020
		ST	968	968
Physics (5 Years, Bachelor of Science and Master of Science (Dual Degree))	Gender-Neutral	OPEN	906	2790
		EWS	694	694
		OBC-NCL	1338	2504
		SC	300	300
		ST	1063	1063
Physics (5 Years, Bachelor of Science and Master of Science (Dual Degree))	Female-only (including Supernumerary)	OPEN	8912	8912
		OBC-NCL	6241	6241
		SC	3107	3107

JEE Cutoffs for IIT Delhi

Academic Program Name	Gender	Seat Type	Opening Rank	Closing Rank
Biotechnology and Biochemical Engineering (4 Years, Bachelor of Technology)	Gender-Neutral	OPEN	3596	5139
		EWS	864	925
		OBC-NCL	1155	2725
		SC	1111	1570
		ST	720	795
Biotechnology and Biochemical Engineering (4 Years, Bachelor of Technology)	Female-only (including Supernumerary)	OPEN	7081	9291
		EWS	2131	2457
		OBC-NCL	3857	5718
		SC	1927	2689
		ST	1442	1442
Chemical Engineering (4 Years, Bachelor of Technology)	Gender-Neutral	OPEN	1791	2361
		OPEN (PwD)	172	172
		EWS	388	499
		OBC-NCL	1005	1369
		SC	569	833
		SC (PwD)	19P	19P
		ST	384	493
Chemical Engineering (4 Years, Bachelor of Technology)	Female-only (including Supernumerary)	OPEN	3730	5442
		EWS	1209	1425
		OBC-NCL	2998	3274
		SC	1158	1274
		ST	649	649
Chemical Engineering (5 Years, Bachelor and Master of Technology (Dual Degree))	Gender-Neutral	OPEN	2463	3996
		EWS	553	709
		OBC-NCL	1470	1986

Academic Program Name	Gender	Seat Type	Opening Rank	Closing Rank
		SC	700	1058
		ST	438	705
Chemical Engineering (5 Years, Bachelor and Master of Technology (Dual Degree))	Female-only (including Supernumerary)	OPEN	6008	7173
		EWS	1592	1592
		OBC-NCL	4193	4299
		SC	1926	2061
		ST	808	808
Civil Engineering (4 Years, Bachelor of Technology)	Gender-Neutral	OPEN	2867	4237
		OPEN (PwD)	170	170
		EWS	542	670
		OBC-NCL	911	1921
		OBC-NCL (PwD)	41P	41P
		SC	459	842
		ST	60	214
Civil Engineering (4 Years, Bachelor of Technology)	Female-only (including Supernumerary)	OPEN	7402	8893
		EWS	1541	1972
		OBC-NCL	2205	4492
		SC	1314	1523
		ST	179	868
Computer Science and Engineering (4 Years, Bachelor of Technology)	Gender-Neutral	OPEN	16	115
		OPEN (PwD)	9	9
		EWS	8	34
		EWS (PwD)	3	3
		OBC-NCL	60	164
		OBC-NCL (PwD)	9	9
		SC	10	46

Academic Program Name	Gender	Seat Type	Opening Rank	Closing Rank
		SC (PwD)	2	2
		ST	18	24
Computer Science and Engineering (4 Years, Bachelor of Technology)	Female-only (including Supernumerary)	OPEN	91	419
		OPEN (PwD)	72	72
		EWS	97	117
		OBC-NCL	252	317
		SC	124	129
		ST	89	116
Computer Science and Engineering (5 Years, Bachelor and Master of Technology (Dual Degree))	Gender-Neutral	OPEN	120	185
		OPEN (PwD)	23	23
		EWS	41	65
		OBC-NCL	114	166
		SC	75	105
		ST	25	54
Computer Science and Engineering (5 Years, Bachelor and Master of Technology (Dual Degree))	Female-only (including Supernumerary)	OPEN	621	724
		EWS	170	170
		OBC-NCL	401	558
		SC	338	338
		ST	210	210
Electrical Engineering (4 Years, Bachelor of Technology)	Gender-Neutral	OPEN	354	576
		OPEN (PwD)	54	61
		EWS	120	150
		EWS (PwD)	18	18
		OBC-NCL	207	449
		OBC-NCL (PwD)	49	49
		SC	82	212
		ST	19	74

Academic Program Name	Gender	Seat Type	Opening Rank	Closing Rank
Electrical Engineering (4 Years, Bachelor of Technology)	Female-only (including Supernumerary)	OPEN	879	1693
		OPEN (PwD)	118P	118P
		EWS	354	382
		OBC-NCL	487	1023
		OBC-NCL (PwD)	69P	69P
		SC	480	662
		ST	187	218
Electrical Engineering (Power and Automation) (4 Years, Bachelor of Technology)	Gender-Neutral	OPEN	589	792
		OPEN (PwD)	112	112
		EWS	161	190
		OBC-NCL	484	578
		SC	217	355
		ST	143	172
Electrical Engineering (Power and Automation) (4 Years, Bachelor of Technology)	Female-only (including Supernumerary)	OPEN	1894	2213
		EWS	479	479
		OBC-NCL	1081	1530
		SC	784	813
		ST	356	356
Energy Engineering (4 Years, Bachelor of Technology)	Gender-Neutral	OPEN	1774	2785
		OPEN (PwD)	3P	3P
		EWS	398	560
		OBC-NCL	1086	1959
		SC	977	1253
		ST	580	704
Energy Engineering (4 Years, Bachelor of Technology)	Female-only (including Supernumerary)	OPEN	5324	5965
		EWS	2017	2017
		OBC-NCL	4019	5238

Academic Program Name	Gender	Seat Type	Opening Rank	Closing Rank
		SC	1702	1702
		ST	1498	1498
Engineering and Computational Mechanics (4 Years, Bachelor of Technology)	Gender-Neutral	OPEN	823	1160
		OPEN (PwD)	100	100
		EWS	166	275
		OBC-NCL	632	799
		OBC-NCL (PwD)	42P	42P
		SC	314	498
		ST	226	280
Engineering and Computational Mechanics (4 Years, Bachelor of Technology)	Female-only (including Supernumerary)	OPEN	1914	2532
		EWS	748	748
		OBC-NCL	1613	1699
		SC	841	841
		ST	473	473
Engineering Physics (4 Years, Bachelor of Technology)	Gender-Neutral	OPEN	172	2562
		OPEN (PwD)	142P	142P
		EWS	610	830
		OBC-NCL	1108	1963
		SC	723	1189
		ST	883	938
Engineering Physics (4 Years, Bachelor of Technology)	Female-only (including Supernumerary)	OPEN	4816	5723
		EWS	2226	2226
		OBC-NCL	3716	4646
		SC	2416	2539
		ST	1292	1292
Materials Engineering (4 Years, Bachelor of Technology)	Gender-Neutral	OPEN	3146	4015
		EWS	803	894

Academic Program Name	Gender	Seat Type	Opening Rank	Closing Rank
		OBC-NCL	2043	2522
		SC	1240	1418
		ST	810	841
Materials Engineering (4 Years, Bachelor of Technology)	Female-only (including Supernumerary)	OPEN	7838	9028
		EWS	2171	2171
		OBC-NCL	5458	5609
		SC	1809	1809
		ST	1387	1387
Mathematics and Computing (4 Years, Bachelor of Technology)	Gender-Neutral	OPEN	135	350
		OPEN (PwD)	15	15
		EWS	48	78
		OBC-NCL	150	229
		OBC-NCL (PwD)	13	13
		SC	49	144
		SC (PwD)	6	6
		ST	47	80
Mathematics and Computing (4 Years, Bachelor of Technology)	Female-only (including Supernumerary)	OPEN	432	815
		OPEN (PwD)	121	121
		EWS	156	191
		OBC-NCL	446	862
		SC	518	701
		ST	223	223
Mathematics and Computing (5 Years, Bachelor and Master of Technology (Dual Degree))	Gender-Neutral	OPEN	357	429
		OPEN (PwD)	44	44
		EWS	88	99
		OBC-NCL	241	269

Academic Program Name	Gender	Seat Type	Opening Rank	Closing Rank
		SC	163	206
		ST	102	109
Mathematics and Computing (5 Years, Bachelor and Master of Technology (Dual Degree))	Female-only (including Supernumerary)	OPEN	1002	1198
		OBC-NCL	885	1003
		SC	377	377
Mechanical Engineering (4 Years, Bachelor of Technology)	Gender-Neutral	OPEN	947	1757
		OPEN (PwD)	47	47
		EWS	285	374
		EWS (PwD)	35P	35P
		OBC-NCL	655	1024
		OBC-NCL (PwD)	68P	68P
		SC	47	528
		ST	177	282
Mechanical Engineering (4 Years, Bachelor of Technology)	Female-only (including Supernumerary)	OPEN	2814	4077
		EWS	1041	1279
		OBC-NCL	1913	2718
		SC	884	1416
		ST	678	678
Production and Industrial Engineering (4 Years, Bachelor of Technology)	Gender-Neutral	OPEN	2082	3213
		EWS	597	769
		OBC-NCL	1060	2279
		SC	951	1364
		ST	624	804
Production and Industrial Engineering (4 Years, Bachelor of Technology)	Female-only (including Supernumerary)	OPEN	5534	7229
		EWS	2369	2376
		OBC-NCL	4561	5398

Academic Program Name	Gender	Seat Type	Opening Rank	Closing Rank
		SC	2077	2649
		ST	1201	1201
Textile Technology (4 Years, Bachelor of Technology)	Gender-Neutral	OPEN	4529	6100
		EWS	952	1253
		OBC-NCL	2813	3308
		SC	1460	1771
		ST	840	984
Textile Technology (4 Years, Bachelor of Technology)	Female-only (including Supernumerary)	OPEN	10345	10958
		EWS	2540	2598
		OBC-NCL	5742	6280
		SC	2722	2769
		ST	1578	1578

JEE Main Cutoffs for IIT Bombay

Academic Program Name	Gender	Seat Type	Opening Rank	Closing Rank
Aerospace Engineering (4 Years, Bachelor of Technology)	Gender-Neutral	OPEN	772	2568
		OPEN (PwD)	49	49
		EWS	449	614
		OBC-NCL	531	1499
		OBC-NCL (PwD)	52P	52P
		SC	59	873
		ST	227	418
Aerospace Engineering (4 Years, Bachelor of Technology)	Female-only (including Supernumerary)	OPEN	2697	4628
		OPEN (PwD)	104	104
		EWS	1172	1241
		OBC-NCL	1692	3668
		SC	1156	1541
		ST	365	365
BS in Mathematics (4 Years, Bachelor of Science)	Gender-Neutral	OPEN	1059	1567
		EWS	394	652
		OBC-NCL	1069	1757
		SC	245	570
		ST	579	579
BS in Mathematics (4 Years, Bachelor of Science)	Female-only (including Supernumerary)	OPEN	2702	3173
		OBC-NCL	2823	2823
		SC	2249	2249
Chemical Engineering (4 Years, Bachelor of Technology)	Gender-Neutral	OPEN	1509	2605
		OPEN (PwD)	143	179
		EWS	385	491

Academic Program Name	Gender	Seat Type	Opening Rank	Closing Rank
		EWS (PwD)	26	26
		OBC-NCL	542	1368
		OBC-NCL (PwD)	10P	97P
		SC	154	928
		ST	142	426
Chemical Engineering (4 Years, Bachelor of Technology)	Female-only (including Supernumerary)	OPEN	3069	5161
		OPEN (PwD)	118	118
		EWS	1465	1647
		OBC-NCL	1961	3304
		SC	664	1634
		ST	402	502
Chemistry (4 Years, Bachelor of Science)	Gender-Neutral	OPEN	5243	7253
		OPEN (PwD)	234P	234P
		EWS	1216	1281
		OBC-NCL	2722	3917
		SC	1610	2087
		ST	1255	1265
Chemistry (4 Years, Bachelor of Science)	Female-only (including Supernumerary)	OPEN	5019	12821
		EWS	2924	2924
		OBC-NCL	6818	6843
		SC	2890	2890
		ST	1226	1226
Civil Engineering (4 Years, Bachelor of Technology)	Gender-Neutral	OPEN	2290	4134
		OPEN (PwD)	158	44P
		EWS	507	787

Academic Program Name	Gender	Seat Type	Opening Rank	Closing Rank
		EWS (PwD)	15P	15P
		OBC-NCL	1078	1884
		OBC-NCL (PwD)	29P	49P
		SC	550	1050
		ST	217	335
		ST (PwD)	8P	8P
Civil Engineering (4 Years, Bachelor of Technology)	Female-only (including Supernumerary)	OPEN	6122	7814
		EWS	1033	2118
		OBC-NCL	1854	4110
		OBC-NCL (PwD)	82P	82P
		SC	1478	1796
		ST	336	770
Computer Science and Engineering (4 Years, Bachelor of Technology)	Gender-Neutral	OPEN	1	66
		OPEN (PwD)	3	5
		EWS	6	20
		EWS (PwD)	2	2
		OBC-NCL	10	58
		OBC-NCL (PwD)	5	7
		SC	2	25
		SC (PwD)	5	5
		ST	1	10
		ST (PwD)	1	1
Computer Science and Engineering (4 Years, Bachelor of Technology)	Female-only (including Supernumerary)	OPEN	56	291
		OPEN (PwD)	11	11

Academic Program Name	Gender	Seat Type	Opening Rank	Closing Rank
		EWS	29	74
		OBC-NCL	59	227
		OBC-NCL (PwD)	12	12
		SC	31	113
		ST	40	87
Economics (4 Years, Bachelor of Science)	Gender-Neutral	OPEN	1370	2102
		OPEN (PwD)	152	152
		EWS	359	508
		OBC-NCL	717	1330
		SC	259	811
		ST	434	437
Economics (4 Years, Bachelor of Science)	Female-only (including Supernumerary)	OPEN	2715	5963
		EWS	895	895
		OBC-NCL	1343	1343
		SC	1654	1654
		ST	480	480
Electrical Engineering (4 Years, Bachelor of Technology)	Gender-Neutral	OPEN	142	463
		OPEN (PwD)	32	32
		EWS	62	133
		OBC-NCL	83	349
		OBC-NCL (PwD)	23	23
		SC	101	191
		SC (PwD)	13P	13P
		ST	34	90

Academic Program Name	Gender	Seat Type	Opening Rank	Closing Rank
Electrical Engineering (4 Years, Bachelor of Technology)	Female-only (including Supernumerary)	OPEN	573	1286
		OPEN (PwD)	80	80
		EWS	256	273
		OBC-NCL	332	930
		SC	323	577
		ST	264	264
Electrical Engineering (5 Years, Bachelor and Master of Technology (Dual Degree))	Gender-Neutral	OPEN	563	966
		OPEN (PwD)	62	62
		EWS	171	253
		OBC-NCL	406	674
		SC	164	299
		ST	99	208
Electrical Engineering (5 Years, Bachelor and Master of Technology (Dual Degree))	Female-only (including Supernumerary)	OPEN	2250	3007
		EWS	588	588
		OBC-NCL	938	1524
		SC	603	626
		ST	323	323
Energy Engineering (4 Years, Bachelor of Technology)	Gender-Neutral	OPEN	1762	2694
		OPEN (PwD)	152P	152P
		EWS	495	782
		OBC-NCL	1395	1811
		SC	492	1090
		ST	732	792
Energy Engineering (4 Years, Bachelor of Technology)	Female-only (including Supernumerary)	OPEN	4565	5524
		EWS	2008	2008

Academic Program Name	Gender	Seat Type	Opening Rank	Closing Rank
		OBC-NCL	3717	3766
		SC	1655	1655
		ST	874	874
Engineering Physics (4 Years, Bachelor of Technology)	Gender-Neutral	OPEN	321	1125
		OPEN (PwD)	70	70
		EWS	351	605
		OBC-NCL	803	1526
		SC	529	897
		ST	534	784
Engineering Physics (4 Years, Bachelor of Technology)	Female-only (including Supernumerary)	OPEN	2925	4566
		EWS	2169	2169
		OBC-NCL	2799	3228
		SC	2082	2329
		ST	1178	1178
Environmental Science and Engineering (4 Years, Bachelor of Technology)	Gender-Neutral	OPEN	3005	5221
		OPEN (PwD)	100P	100P
		EWS	924	1109
		OBC-NCL	2167	2761
		SC	1195	1455
		ST	818	923
Environmental Science and Engineering (4 Years, Bachelor of Technology)	Female-only (including Supernumerary)	OPEN	8179	9702
		EWS	2256	2256
		OBC-NCL	3939	4103
		SC	2287	2287
		ST	1045	1045

Academic Program Name	Gender	Seat Type	Opening Rank	Closing Rank
Mechanical Engineering (4 Years, Bachelor of Technology)	Gender-Neutral	OPEN	493	1691
		OPEN (PwD)	18	66
		EWS	219	373
		EWS (PwD)	14	14
		OBC-NCL	304	942
		OBC-NCL (PwD)	73	38P
		SC	221	482
		ST	86	261
Mechanical Engineering (4 Years, Bachelor of Technology)	Female-only (including Supernumerary)	OPEN	1792	4173
		EWS	690	756
		OBC-NCL	1227	2267
		SC	636	1226
		ST	344	513
Metallurgical Engineering and Materials Science (4 Years, Bachelor of Technology)	Gender-Neutral	OPEN	2576	4428
		OPEN (PwD)	67P	157P
		EWS	549	885
		OBC-NCL	1175	2284
		OBC-NCL (PwD)	74P	74P
		SC	837	1378
		ST	439	799
Metallurgical Engineering and Materials Science (4 Years, Bachelor of Technology)	Female-only (including Supernumerary)	OPEN	5426	7599
		EWS	2185	2213
		OBC-NCL	4343	4602
		SC	2168	2570
		ST	752	813