

CAREERS 360
ADMISSION GUIDANCE **Series**

GMAT Cut-Off 2025

For Indian B-School



TABLE OF CONTENT

Introduction	2
Overview of GMAT Cut off	3
Factors Influencing GMAT Cutoffs	4
GMAT Cutoff for Top MBA Colleges in India	5
• GMAT Cutoff for IIMs	
• GMAT Cutoff for Non-IIMs	
The GMAT Score Scale	8
• GMAT Percentile Rankings	
• Interpreting Your Percentile Ranking	
GMAT Score Vs Percentile	9

Introduction

Graduate Management Admission Council (GMAC) has discontinued the GMAT exam and instead introduced the [GMAT Focus Edition](#). The GMAT exam score, as you must be aware, is the most significant factor when it comes to admission to [MBA programmes](#) in reputed business schools across the world. Each business school accepting the GMAT exam has its own GMAT cut off for admission. If you are seeking admission in a certain b-school then you must meet the GMAT cutoff requirements of that institution to be eligible for admission.

Once you receive your GMAT scores, you must send them to the business schools where you wish to study. You will have a chance to get admission provided you meet the GMAT cut off requirement of the institution. However, meeting the GMAT cutoff requirement will not be the only factor that determines your admission to top business schools. According to the GMAC, there is no standard GMAT cut-off score for all universities.

A score over 700 is generally preferred by the top business schools, however, the requirement may vary depending on the location and ranking of the university. Many institutions also acknowledge other important factors like work experience, GPA, and essays to enroll eligible candidates.



Overview of GMAT Cut Off

After appearing in GMAT, the most common question in the minds of candidates are - will they get the desired B-school with the marks they have scored? To get the answer, they should check the GMAT cut-offs. The cut-offs have their own significance as they set the minimum benchmark for admission to top MBA colleges in India. Candidates who do not clear the GMAT cut-offs will not be eligible for admission to that university.

Another question they have is- What is the GMAT cutoff for top Bschoools in India? [GMAT cutoff for top B-schools in India](#) ranges between 600 to 750+. There are more than 100 MBA colleges in India accepting GMAT scores like [IIMs](#), ISB, XLRI, SPJIMR, etc. for admission to its one-year PG programs.



Factors Influencing GMAT Cutoffs

Multiple factors influence the GMAT cutoff for admission to B-schools in India. Some of the parameters influencing GMAT cutoff for Indian MBA colleges are:

- Number of candidates who took the GMAT exam.
- Difficulty level of the GMAT exam.
- Total candidates who passed the GMAT exam.
- Total seats available in the [MBA college](#).
- Average score of the applicants.



GMAT Cutoff for Top MBA Colleges in India

Candidates must aim to score at least 650 in the GMAT exam for [MBA admission](#) to their desired B-school. MBA aspirants scoring more than 750 in the GMAT exam focus edition India can easily get a 99%ile and admission to [top MBA colleges in India](#). Given below are the average GMAT cutoffs for B-schools in India including [IIMs](#) and non-IIMs.

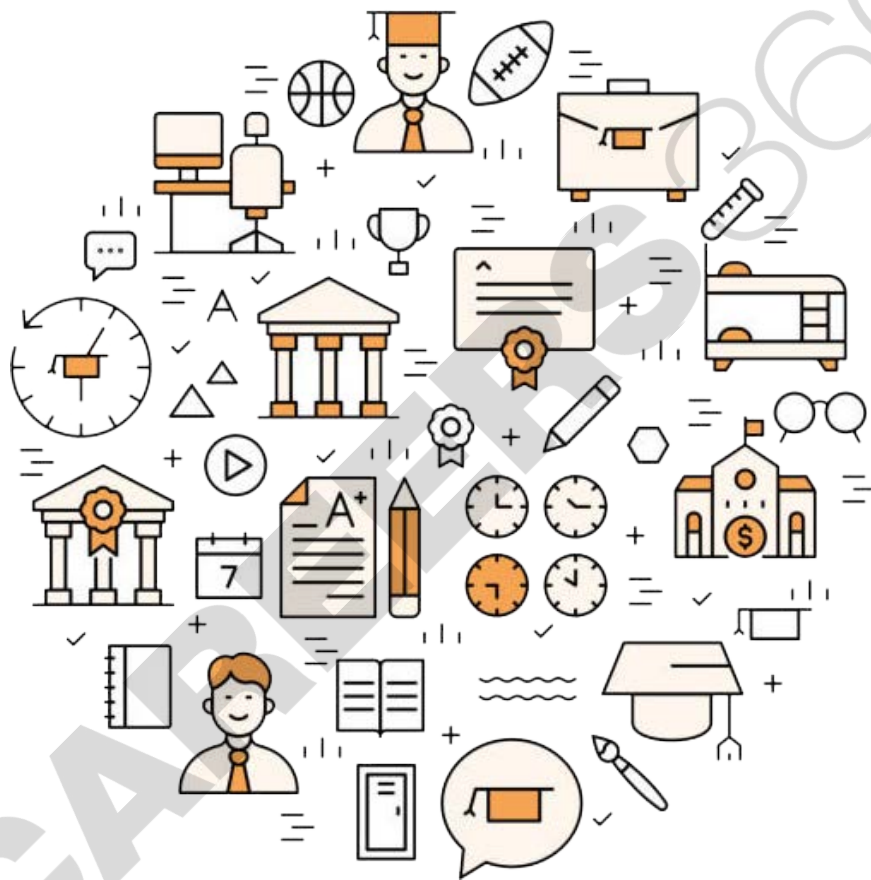
GMAT Cutoff for IIMs

Name of the IIMs in India	Average GMAT cutoff
IIM Ahmedabad	720
IIM Bangalore	720
IIM Calcutta	720+
IIM Lucknow	710+
IIM Indore	700+
IIM Ranchi	670
IIM Trichy	680+
IIM Amritsar	600+
IIM Shillong	700+
IIM Kozhikode	700+
IIM Raipur	680+
IIM Rohtak	650+
IIM Kashipur	670+
IIM Udaipur	680+
IIM Rohtak	700+
IIM Sambalpur	650
IIM Vizag	680

GMAT Cutoff for Non-IIMs

Name of the MBA Institute	Average GMAT cutoff for Top MBA Colleges
Indian School of Business	700
SDM Institute of Management Development	550
Fortune Institute of International Business	520
Indus Business Academy	500
Adarsh Institute of Management and Information Technology	500
Xavier University (XIMB)	550
PES University	450
Universal Business School	550
Institute of Management Technology	500
Institute of Management Technology, Ghaziabad	700-720
Birla Institute of Technology and Science, Pilani	600+
K.J.Somaiya Institute of Management and Studies and Research, Mumbai	550-600
Lovely Professional University, Jalandhar	650-700
Fore School of Management, Delhi	600-650
The Great Lakes Institute of Management	650
S.P Jain Institute of Management and Research	700
Xavier School of Management	630-720
Amity School of Business	550
Institute of Management Technology	500

<u>Xavier Institute of Management and Entrepreneurship</u>	600
<u>Christ University Institute of Management</u>	450
<u>Management Development Institute</u>	660
<u>Narsee Monjee Institute of Management Studies</u>	600



The GMAT Score Scale

GMAC have made changes in the GMAT Exam (Focus Edition) score scale. This change has been made to make it easier for you and schools to distinguish scores between versions.

Total Score: GMAT Exam (Focus Edition): 205-805

The GMAT Exam Scoring Scale (Focus Edition) has been modified to reflect changes in the test-taking population, which has become more diverse and global. Over the years, scores have changed significantly, resulting in an uneven distribution. The updated scoring scale fixes that, allowing schools to better differentiate your performance on the test.

GMAT Percentile Rankings

The percentile rank indicates what percentage of test takers you did better than. For example, a 75% percentile ranking means you outperformed 75% of the examinees and 25% of the examinees outperformed you.

Interpreting Your Percentile Ranking - Total Score Percentile

Total scores for the GMAT exam (Focus Edition) range from 205 to 805. Your GMAT Total Score test consists of Quantitative Reasoning, Verbal Reasoning, and Data Insights sections. The contribution of each section score to the total score is calculated equally across sections.



GMAT Score Vs Percentile

MBA aspirants must be aware of the [GMAT cutoff](#) accepted by top B-schools in India in the form of percentile. They can check out the GMAT score vs percentile ranking to know their percentile based on the scores obtained in GMAT.

GMAT Score	GMAT Mean Score	GMAT Percentile Ranking
805	553.35	100%
755		100%
705		98%
655		91%
605		72%
555		49%
505		28%
455		15%
405		7%
355		3%
305		1%
255		0%
205		0%

NOTE: Sample Size: 596,155 & Standard Deviation: 88.53

